



FOR IMMEDIATE RELEASE

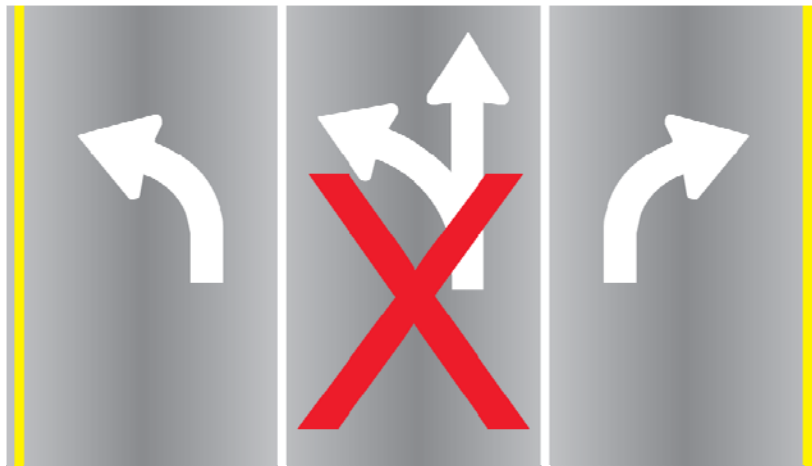
November 1, 2010

UPDATE: Ramp Closure Advisory for the I-10 Widening Project
Closure of Highland Road On-Ramp to I-10 Westbound

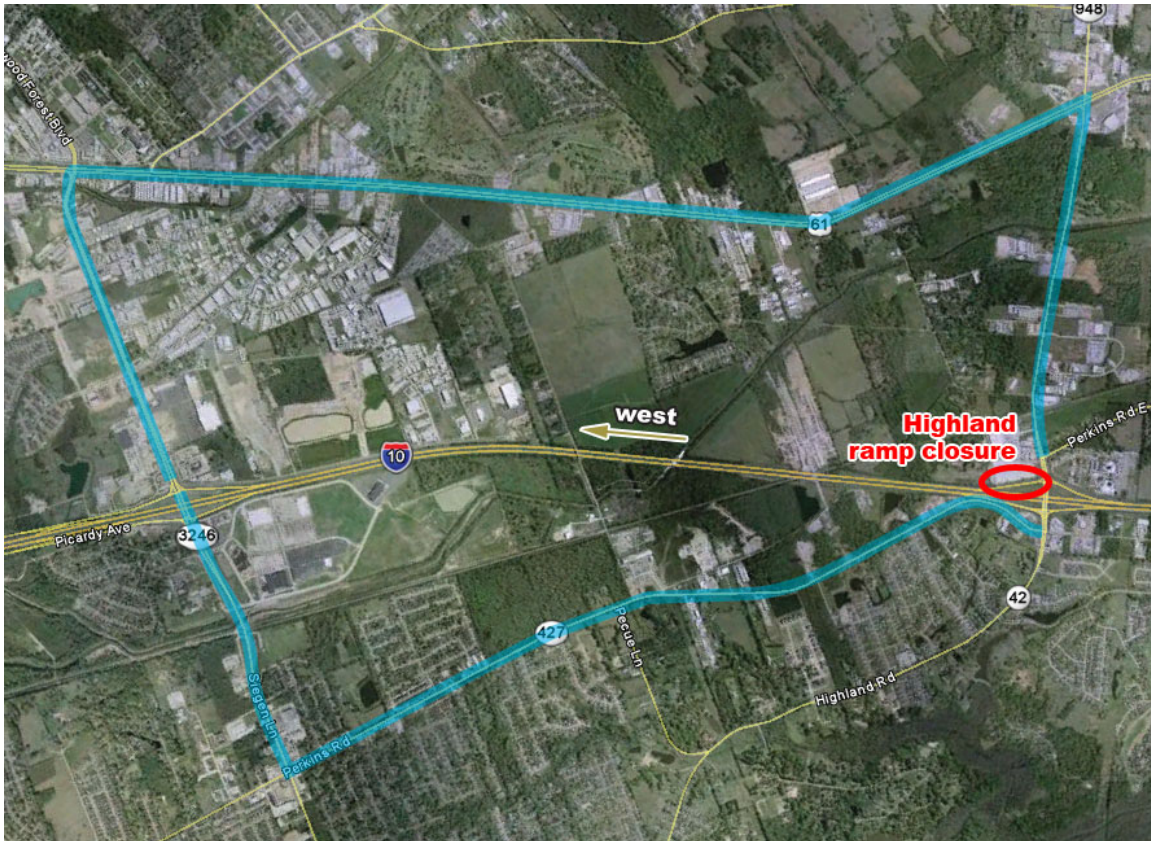
Baton Rouge— There is a scheduled ramp closure associated with the I-10 widening project for tonight. The following closure is scheduled for Monday, November 1:

- The Highland Road on-ramp to I-10 westbound will be closed between 9 p.m. and 4 a.m. for concrete work.

This ramp closure will also necessitate the closure of the center lane of westbound Old Perkins Road at Highland Road. (See illustration below.) Motorists will be able to turn left and right onto Old Perkins.



Motorists wishing to detour this area may turn right onto Highland Rd. and travel north to Airline Highway (US 61). Turn left onto Airline Hwy. and travel west to Siegen Lane. Turn left onto Siegen Ln. and travel south to reconnect with I-10. Motorists may also turn left onto Highland Rd. and travel south to Perkins Road. Turn right onto Perkins Rd. and travel west to Siegen Ln. Turn right onto Siegen Ln. and travel north to reconnect with I-10. See the map below with these routes highlighted in blue.



The Louisiana Department of Transportation and Development appreciates your patience and encourages drivers to exercise caution and obey all warning signs through the construction area. Please be aware of all construction workers and equipment.

The Louisiana DOTD Geaux Wider program is a multi-year construction initiative designed to increase capacity, improve safety and enhance mobility on Interstates 10 and 12 in East Baton Rouge and Livingston Parishes.

The following interstate segments will be widened to six lanes under the Geaux Wider program:

- Interstate 10, from the I-10/12 split to Siegen Lane.
- Interstate 10, from the Siegen Lane interchange to Highland Road.
- Interstate 12, from the O’Neal Lane interchange to Pete’s Highway.
- Interstate 12 eastbound, from Pete’s Highway to Juban Road.

Construction is underway now with the completion date for the entire program estimated for 2013. For more information, contact Louisiana DOTD Customer Service at 1-877-4LA-DOTD (3683) or visit www.geauxwider.com.

###